



2V800AH



Features:

- ▲ Maintenance-free operation
- ▲ Stable quality and high reliability
- ▲ Compact design
- ▲ 10 years design time (at 25°C)

Applications:

- ♣ UPS (Uninterruptable Power System)
- ♣ Emergency lighting
- ♣ Solar panel system
- ♣ Alarm and security system
- ♣ Tele-communication system
- ♣ Fire alarm and security systems
- ♣ DC power supply Auto control system
- ♣ Backup power for testing and measuring instruments
- ♣ Electronic apparatus and equipment Communication power supply
- ♣ etc

Specifications:

Type	Specification
Nominal Voltage	2v
Nominal Capacity	800ah
Dimension	Length: 410±3mm
	Width: 175±3mm
	Container Height: 330±3mm
	Total Height(with Terminal):365±3mm
Approx Weight	49kg
Terminal	T11
Container material	ABS
Rated Capacity	850.0ah/42.5A (20hrs, 1.80V/cell,25°C/77°F)
	800ah/80.0A (10hrs, 1.80V/cell,25°C/77°F)
	720ah/144.0A (5hrs, 1.75V/cell,25°C/77°F)
	440.0ah/440.0A (1hrs, 1.60V/cell,25°C/77°F)
Max.Discharge Current	7000A(5s)
Internal Resistance	Approx 0.45mΩ
Operation Temp.Range	Discharge:-15-50°C(5-122°F)
	Charge: 0-40°C(32-104°F)
	Storage: -15-40°C(5-104°F)
Nominal Operating Temp.Range	25±3°C(77±5°F)
Cycle Use	2.4V-2.5V(25°C/77°F) Coefficient:30mv/°C (Initial charging current less than 160A)
Standby Use	2.25V-2.3V(25°C/77°F) Coefficient:20mv/°C (No limit on Initial Charging Current)

Capacity affected by Temp.	103%	40°C(104°F)
	100%	25°C(77°F)
	86%	0°C(32°F)

Self Discharge:

KANGLIDA batteries may be stored for up to 6months at 25°C(77°F) and then a refreshing charge is required, for higher temperatures the time interval will be shorter.

Capacity after storage	1month	3month	6month	12month
Self-discharge 25°C(77°F)	98%	91%	82%	65%

Note: the above characteristics data are average values obtained within three charge/discharge cycles, not the minimum values.

Discharge Constant Current (Amperes at 77°F/25°C)

EndPoint Volts/Cell	10Min	15Min	30Min	45Min	1h	3h	5h	10h
1.60V	1410	1070	808	576	440	209	156	86.4
1.65V	1336	1018	772	553	428	205	152	84.8
1.70V	1260	965	735	529	413	202	148	83.2
1.75V	1182	911	697	504	388	200	144	81.6
1.80V	1103	857	658	477	379	194	138	80.0

Discharge Constant Power (Watts at 77°F/25°C)

EndPoint Volts/Cell	10Min	15Min	30Min	45Min	1h	3h	5h	10h
1.60V	2253	1840	1371	1034	891	418	288	172
1.65V	2122	1740	1302	986	854	406	283	168
1.70V	1991	1640	1232	937	814	398	278	166
1.75V	1860	1538	1161	886	774	390	273	163
1.80V	1730	1436	1089	835	732	381	268	160

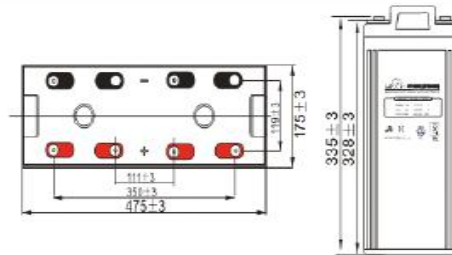
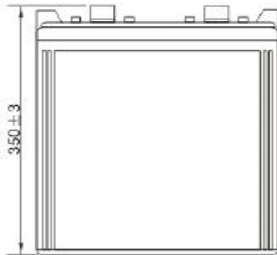
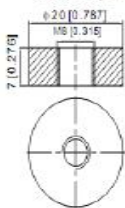
Characteristics:

Dimensions

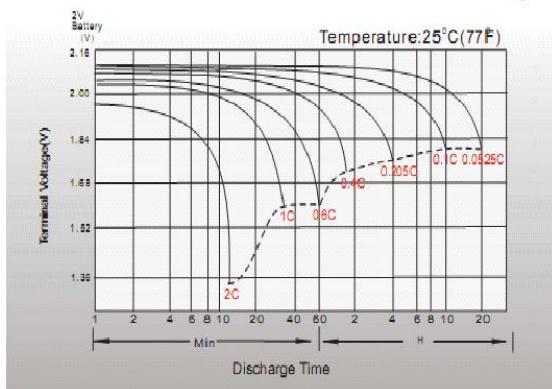
KA

T11 Terminal

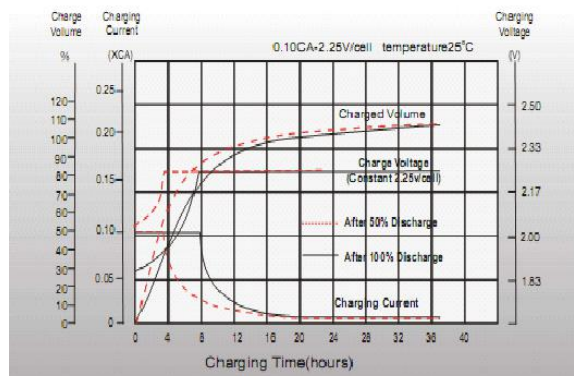
Unit: mm [inches]



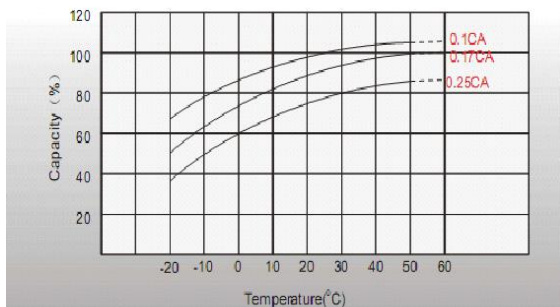
Discharge Characteristics



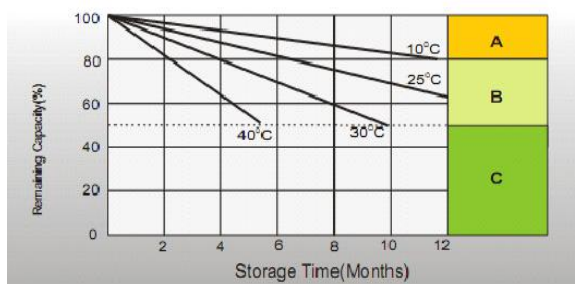
Float Charging Characteristics



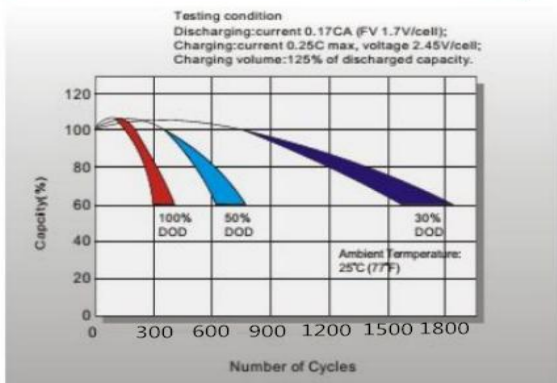
Temperature Effects in Relation to Battery Capacity



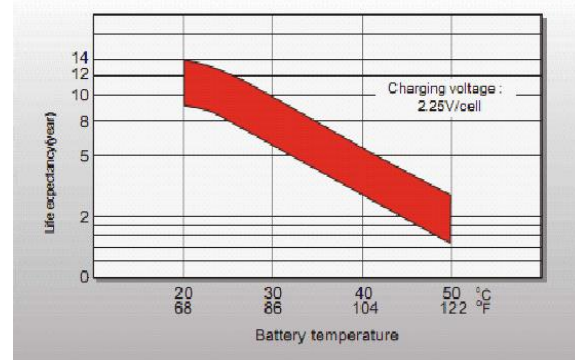
Self Discharge Characteristics



Cycle Life in Relation to Depth of Discharge



Effect of Temperature on Long Term Float Life



Attentions:

1. After received product, please checked box damaged or not, if find crack on battery body, contact with us and logistics, it should be caused by boorish handle during delivery;
2. Don't pull or shake terminal, otherwise, it may cause terminal loosen;
3. Battery is not allowed close to Tepid source or basked under the sun for a long time;
4. Charge in the obturate container is not allowed;
5. No short circuit. Battery should be stored full of electronic when not in need, and the battery should be charged every three months in order to avoid the irreversible sulphation. When battery case bursts or electrolyte leaks, battery should be changed lest the acid corrosion.
6. No battery in environment with the acid gas.
7. When battery is used as the backup battery, be careful and check it at regular time to avoid the damage battery. Especially the battery beyond one year should be checked in time, and change the less capacity and scrapped battery. (some batteries maybe have voltage but no current; some batteries maybe have current but no voltage; some maybe have both but less capacity; all these conditions cannot meet the work, reach the power-on time. Do not forth small battery, cause the huge losses)
8. Forbidden put battery in the fire, otherwise it will cause an explosion.
9. When battery cracks or leaks, please use cotton cloth clean it. When skin contacts to the liquid, wash with fresh water immediately. See doctor if serious.
10. No wash on the surface of the battery with the organic solution.

康利达国际控股集团有限公司 KANGLIDA INTERNATIONAL HOLDING GROUP CO., LTD

郑州康利达电子电源有限公司 Zhengzhou Kanglida electronic power Co., LTD

<http://www.cnbattery.cn> Fax: 86-0371-68786444

<http://www.xudianchi.com> Tel: 86-0371-6876444/55628530-816